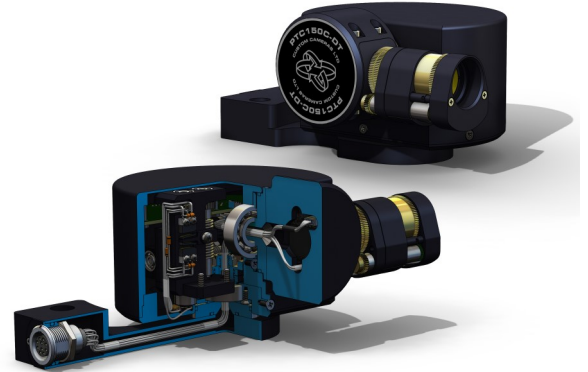


CUSTOM CAMERAS LTD

Radiation Tolerant & Scientific Camera Systems
Product Development & Manufacture

FEATURES

- Robust housing machined from solid aluminium.
- Integral camera for simplicity.
- Small overall dimensions for use in areas with limited available space.
- Can be mounted in a variety of positions while maintaining full operation.
- Small handheld controller available.
- Underwater & IP65 versions.



DESCRIPTION

The PTC150 is an ultra-compact, high quality integral CCTV colour camera and pan and tilt unit for general industrial applications where space is at a premium. It may be mounted upright, inverted or perpendicular to a surface and, in conjunction with a hand-held control box, allows the user to obtain comprehensive views of the area of interest, with a total tilt range of 180° and a pan range of >330°.

The main body is machined from a single block of aluminium alloy, and has a black anodised finish.

TECHNICAL DATA

PERFORMANCE

SENSOR:	1/4" CCD, 752 x 582 pixels (PAL), 768 x 494 pixels (NTSC)
RESOLUTION:	450 TV lines
SENSITIVITY:	20 lux for full quality pictures, 2 lux limiting
OPTICAL:	3.8 mm F2 lens, or 2.5mm, 8mm, 12mm & 25mm
PAN MOVEMENT:	Approx. ±150° with adjustable stops
PAN SPEED:	5° per second
TILT MOVEMENT:	Approx. ±90° with adjustable stops
TILT SPEED:	5° per second

ENVIRONMENTAL

OPERATING TEMPERATURE:	0 - 50° C
RADIATION TOLERANCE:	Total dose >10 ² Gy (Gamma), Dose rate >1 Gy/Hour
INGRESS PROTECTION:	IP65 or IP68, 50 metres

DIMENSIONS AND WEIGHT

DIMENSIONS:	100mm Ø x 75mm high (Camera in line with base)
WEIGHT:	1kg

INTERCONNECTION

CONNECTORS:	7 pole Lemo connector, or 10 pole Lemo connector
--------------------	--

CUSTOM CAMERAS LTD

Unit 4, The Sidings, Cathedral Park,
Wells, Somerset, England, BA5 1LJ

Tel: +44 (0)1749 870066 Email: andybrownlow@customcameras.co.uk

Web: www.customcameras.co.uk